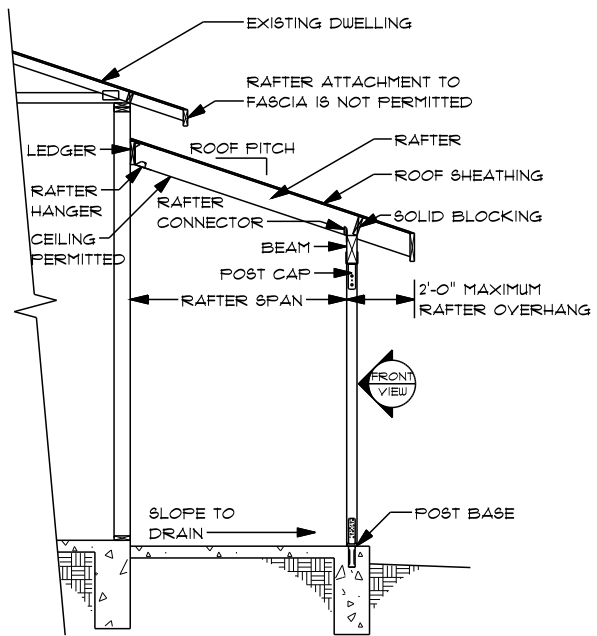




# SINGLE FAMILY DWELLING PATIO COVER (LIGHT ROOFING MATERIAL)

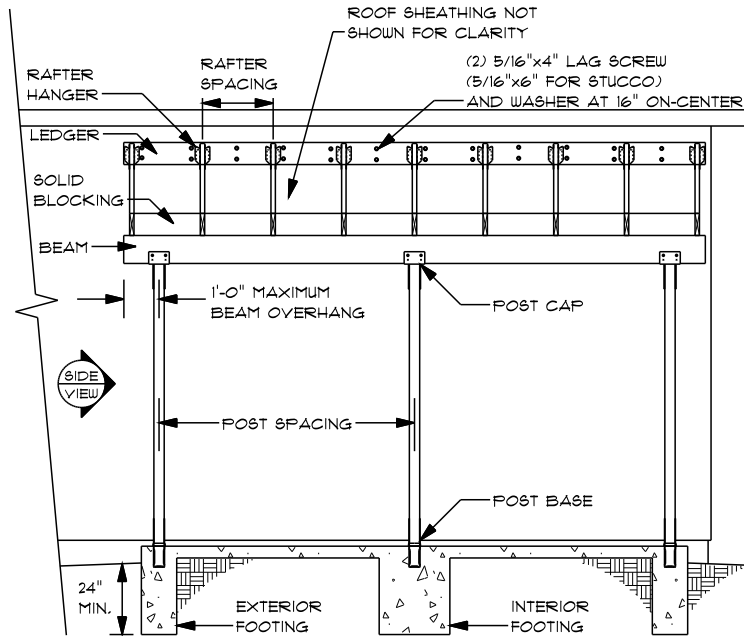
LIMITED TO 12'-0" MAXIMUM SPAN AND  
10'-0" MAXIMUM POST HEIGHT IN ACCORDANCE WITH THE  
2003 INTERNATIONAL RESIDENTIAL CODE (IRC)

NORTHERN  
NEVADA  
CHAPTER  
INTERNATIONAL  
CODE  
COUNCIL



**SIDE VIEW**

NO SCALE



**FRONT VIEW**

NO SCALE

RAFTERS		
MIN. SIZE	MAX. SPACING	MAX. SPAN
2x4	12"	9'-10"
	16"	8'-11"
2x6	24"	7'-10"
	12"	12'-0"
2x8	16"	12'-0"
	24"	11'-9"

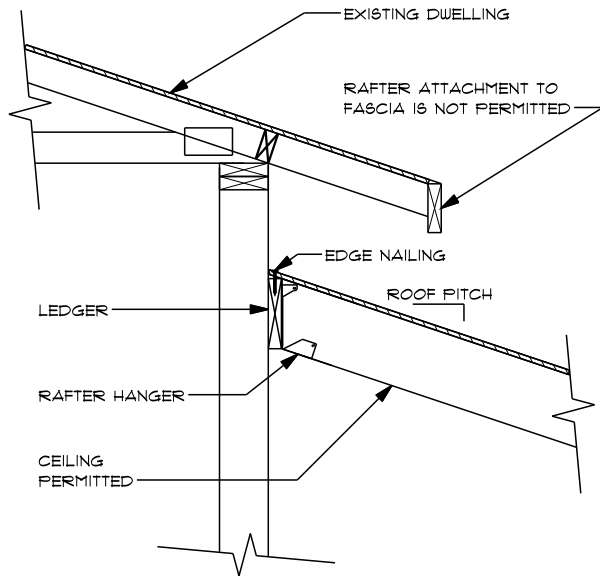
HEADER					
MAX. POST SPACING	MAX. SPAN				
	8'-0"	9'-0"	10'-0"	11'-0"	12'-0"
8'-0"	4x6	4x6	4x6	4x8	4x8
9'-0"	4x8	4x8	4x8	4x8	4x8
10'-0"	4x8	4x8	4x8	4x8	4x8
11'-0"	4x8	4x8	4x10	4x10	4x10
12'-0"	4x10	4x10	4x10	4x10	4x10

- ALL LUMBER SHALL BE DOUGLAS FIR #2 U.N.O.
- ALL CONCRETE SHALL BE 3,500 PSI (5%-1% AIR ENTRAINED)

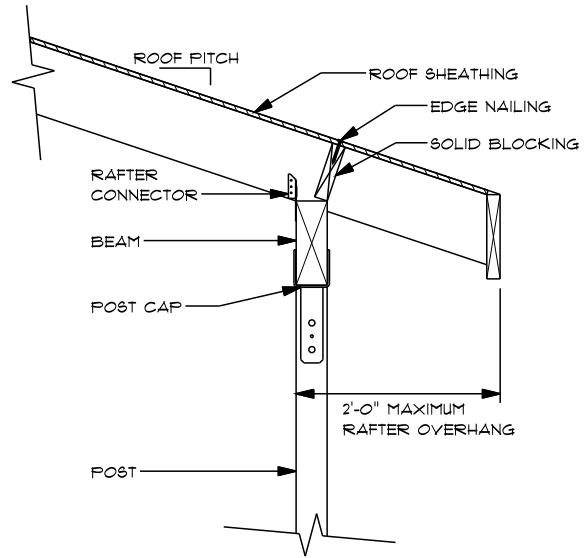
MINIMUM SQUARE FOOTING SIZE (OPTIONAL ROUND FOOTING SIZE)						
MAX. POST SPACING	FOOTING LOCATION	MAX. RAFTER SPAN				
		8'-0"	9'-0"	10'-0"	11'-0"	12'-0"
8'-0"	EXTERIOR	12" (12")	12" (12")	12" (12")	12" (12")	12" (14")
	INTERIOR	12" (14")	14" (14")	14" (16")	14" (16")	14" (16")
9'-0"	EXTERIOR	12" (12")	12" (12")	12" (12")	12" (14")	12" (14")
	INTERIOR	14" (16")	14" (16")	14" (16")	14" (16")	16" (18")
10'-0"	EXTERIOR	12" (12")	12" (12")	12" (14")	12" (14")	12" (14")
	INTERIOR	14" (16")	14" (16")	16" (18")	16" (18")	16" (18")
11'-0"	EXTERIOR	12" (12")	12" (14")	12" (14")	12" (14")	14" (14")
	INTERIOR	14" (16")	16" (18")	16" (18")	16" (18")	16" (18")
12'-0"	EXTERIOR	12" (14")	12" (14")	12" (14")	14" (14")	14" (16")
	INTERIOR	16" (18")	16" (18")	16" (18")	18" (20")	18" (20")

**PROJECT DESIGN CRITERIA**

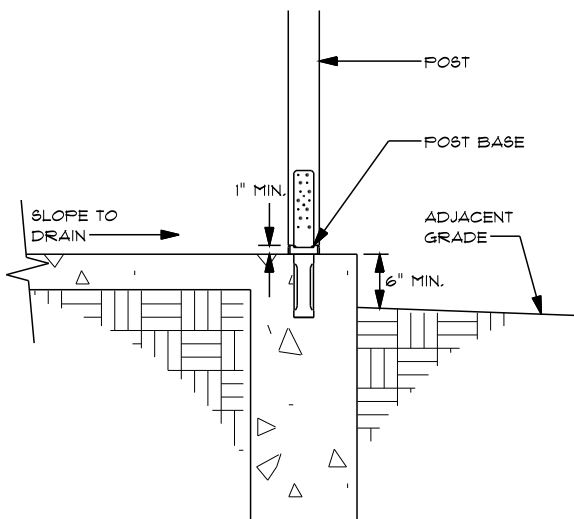
OWNER: \_\_\_\_\_ ADDRESS: \_\_\_\_\_  
 OVERALL DIMENSION: \_\_\_\_\_  
 PARCEL NO.: \_\_\_\_\_ TOTAL SQ. FT.: \_\_\_\_\_  
 ELEVATION ABOVE SEA LEVEL: \_\_\_\_\_ GROUND SNOW LOAD: 20-PSF DESIGN WIND LOAD 105-MPH, (3-SECOND GUST): EXPOSURE C SEISMIC DESIGN CATEGORY: D2  
 DESIGN ROOF LIVE LOAD: 20-PSF DESIGN ROOF DEAD LOAD: 10-PSF ALLOWABLE DEFLECTION: L/240 DESIGN SOIL BEARING PRESSURE: 1500-PSF  
 ROOF COVERING: \_\_\_\_\_ ROOF SHEATHING (1/2" MINIMUM): \_\_\_\_\_ (2:12 MIN. 5:12 MAX.): \_\_\_\_\_ LEDGER SIZE (LxW): \_\_\_\_\_  
 RAFTER SIZE: \_\_\_\_\_ RAFTER SPACING (24" MAXIMUM): \_\_\_\_\_ RAFTER SPAN (12'-0" MAXIMUM): \_\_\_\_\_ (360\* MIN. DOWNLOAD): \_\_\_\_\_  
 RAFTER CONNECTOR TO BEAM (369\* MIN. UPLIFT): \_\_\_\_\_ BEAM SIZE: \_\_\_\_\_ POST SIZE (LxWxH) (4"x4"x6'-8" MIN.): \_\_\_\_\_ POST SPACING (12'-0" MAXIMUM): \_\_\_\_\_  
 POST CAP (2,214\* MIN. UPLIFT): \_\_\_\_\_ POST BASE (2,214\* MIN. UPLIFT): \_\_\_\_\_ EXT. FOOTING SIZE (SQUARE/ROUND): \_\_\_\_\_ INT. FOOTING SIZE (SQUARE/ROUND): \_\_\_\_\_



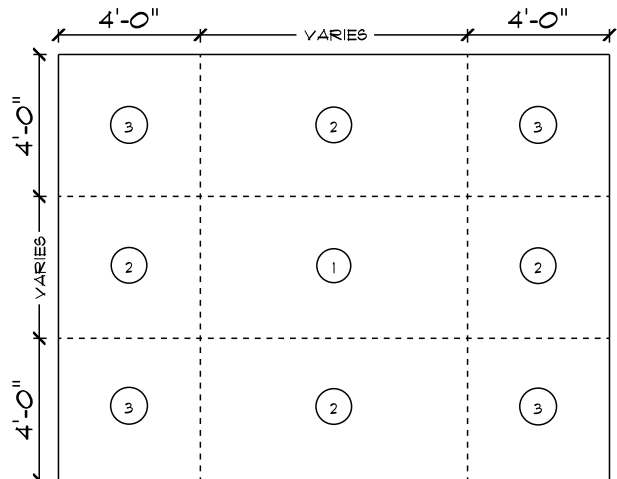
LEDGER CONNECTION (NO SCALE)



RAFTER/BREAM/POST CAP CONNECTION (NO SCALE)



POST BASE CONNECTION (NO SCALE)



FASTENER: 8d COMMON NAIL

ZONE	EDGE NAILING	FIELD NAILING
1	6" ON-CENTER	12" ON-CENTER
2 & 3	6" ON-CENTER	6" ON-CENTER

ROOF SHEATHING NAILING SCHEDULE (NO SCALE)

GENERAL NOTES

1. ALL LUMBER SHALL BE DOUGLAS FIR #2 U.N.O.
2. ALL CONCRETE SHALL BE 3,500 PSI (5%-7% AIR ENTRAINED)
3. ALL HARDWARE SHALL BE INSTALLED IN ACCORDANCE WITH THE MANUFACTURER'S INSTALLATION INSTRUCTIONS.
4. NUMBER, TYPE, AND SPACING OF FASTENERS FOR STRUCTURAL MEMBERS SHALL COMPLY WITH IRC TABLE R602.3(1).
5. ASPHALT (COMP) SHINGLES REQUIRE TWO LAYERS OF UNDERLAYMENT FOR ROOF SLOPES FROM 2:12 TO 4:12. A MINIMUM ROOF SLOPE OF 2:12 IS REQUIRED FOR ASPHALT SHINGLES AND 3:12 IS REQUIRED FOR WOOD SHAKES.